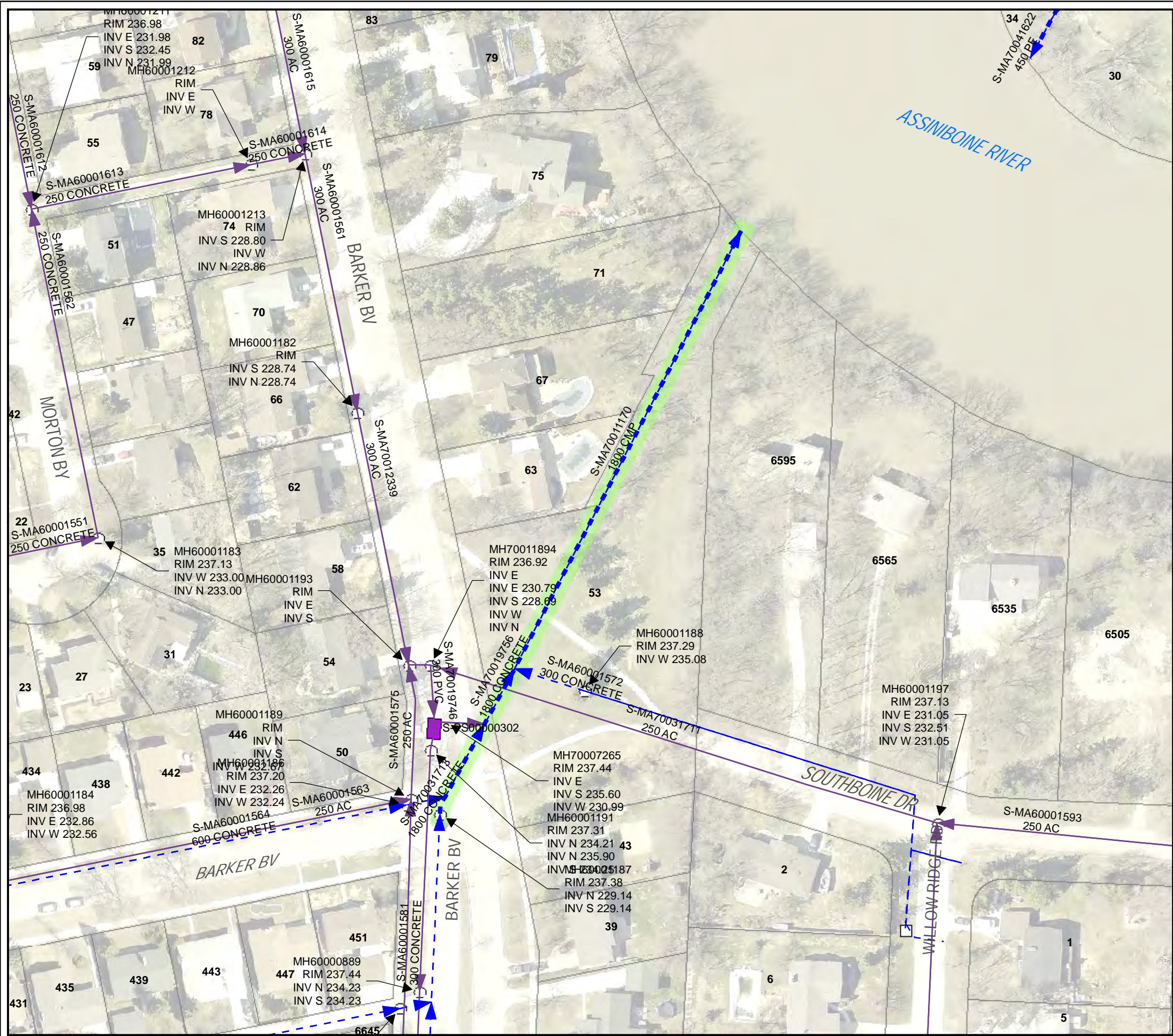


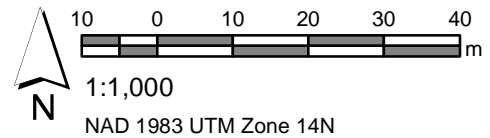
ANSI B 279-4mm x 431.8mm
Project Management Initials: Designer: Checked: Approved:
Last saved by: CLOUSTONC (2016-03-21) Last Plotted: never
Filename: P:\6043127\900-WORK\920-929 (GIS-GRAPHICS)\692-2015_DRAWING_TENDER232-2016_RO.MXD



Summer Inspections

- LEGEND**
- ▶ LDS
 - ▶ WWS
 - - - CB Lead
 - SEWER MANHOLE
 - CATCH BASIN
 - SEWER PUMP STATION

SITE CONSIDERATIONS:



Issue Status: Tender

AECOM

Outfall Asset Number: S-MA70011170 - 159.82m
Upstream Sewer Asset Number: None - 0m
Upstream Manhole Coordinates: 621207.0239E, 5525034.8260N
Location: 63 BARKER

The City of Winnipeg
BID Opportunity No. 232-2016

Drawing: 211